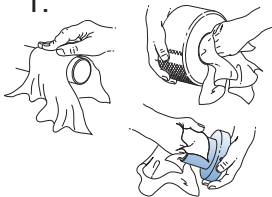
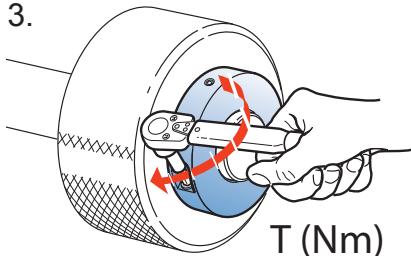


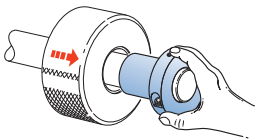
1.



3.



2.



ETP-EXPRESS	T (Nm)
15 - 35	5
38 - 60	21
70 - 80	39
90* - 100*	39

ETP-POWER	T (Nm)
15 - 30	8
32 - 40	25

ETP-TECHNO	T (Nm)
15 - 20	10
25 - 32	16
35 - 45	24
50 - 75	40
80	60
90* - 110*	60
120*	50
130*	46

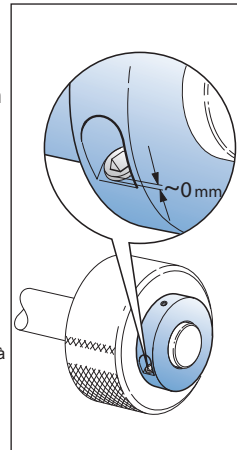
\*) Two screws.  
Zwei Schrauben.  
Duex vis.  
Dos tornillos.

**UK:** At the recommended tightening torque the screw position is approx. level with the recess.

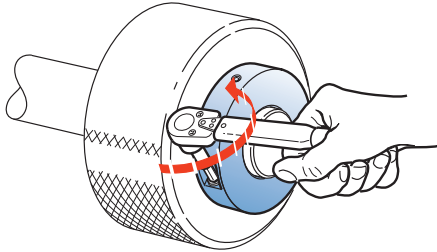
**DE:** Das empfohlene Anzugsmoment ist erreicht, wenn die Schraubenoberkante mit der Planfläche übereinstimmt.  
**FR:** Au couple de serrage recommandé la vis affleure approximativement l'évidement.

**ES:** Al alcanzar el par de apriete la posición del tornillo es aprox. la de la zona plana.

**IT:** Una volta serrata la vite alla coppia di serraggio indicata, la testa della vite verrà a trovarsi circa allo stesso livello della propria sede.



1.



2.

