



ETP HYDRO-GRIP® CL

CL is a sleeve for **interchangeable tool assembly**. This means the sleeve can be easily switched between different tools. Pressurizing is carried out with a high pressure grease pump, axially in the sleeve's flange.

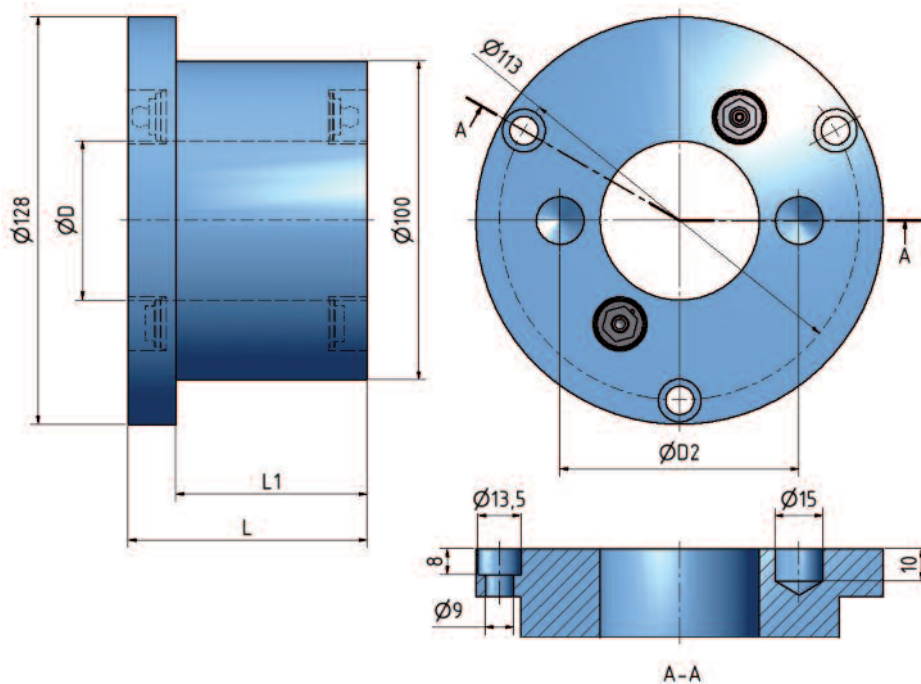


Technical Specification

Type	D	D2	L	L1
CL-45/100-75*	45	-	75	60
CL-50/100-75**	50	75	75	60

*) The CL Ø45 sleeve has two carrier pegs, 8,5 x 5 mm on a 70 mm pitch diameter

***) The CL Ø50 has two, threaded M5-holes for carrier pegs, on a 70 mm pitch diameter.
See page 44 for more information.





ETP HYDRO-GRIP® BL

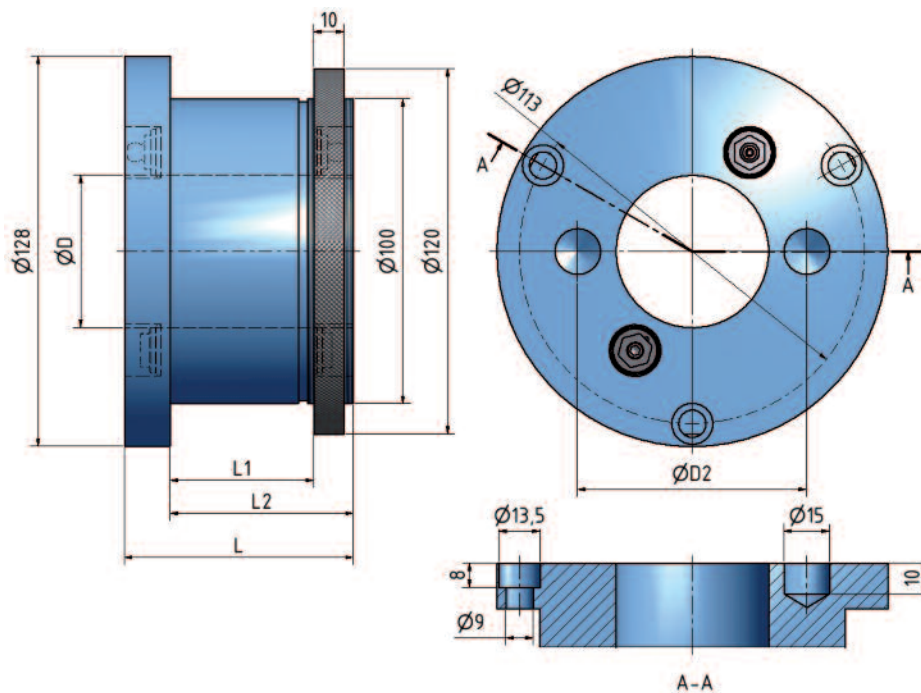
BL is a sleeve for **interchangeable tool assembly** which has a thread and locking nut. This means the sleeve can be easily switched between different tools. Pressurizing is carried out with a high pressure grease pump, axially in the sleeve's flange.

Technical Specification

Type	D	D2	L	L1	L2
BL-45/100-75*	45	-	75	45	60
BL-50/100-75**	50	75	75	45	60
BL-50/100-115**	50	75	115	85	100

*) The BL-45 sleeve has two carrier pegs, 8,5 x 5 mm, on a 70 mm pitch diameter.

**) The BL Ø50 has two, threaded M5-holes for carrier pegs, on a 70 mm pitch diameter.
See page 44 for more information.





ETP HYDRO-GRIP® AL

AL is for **permanent assembly**. Made to allow for a light press fit. The tool and HYDRO-GRIP should be bolted together. Pressurizing is carried out with a high pressure grease pump, axially in the sleeve's flange.

Technical Specification

Type	D	D2
AL-45/100-55*	45	-
AL-50/100-55**	50	75

*) The AL-45 sleeve has two carrier pegs, 8,5 x 5 mm, on a 70 mm pitch diameter.

**) The AL-50 has two, threaded M5-holes for carrier pegs, on a 70 mm pitch diameter.

See page 44 for more information.

