



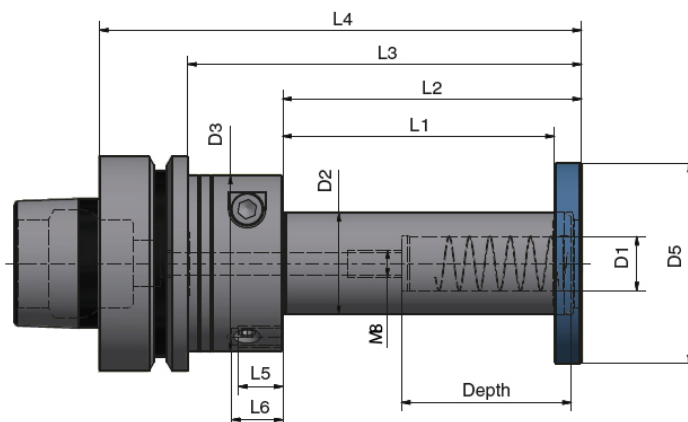
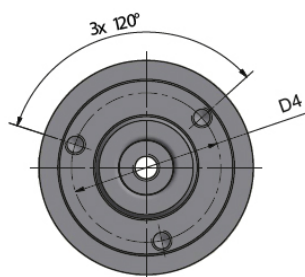
Benefits and features

- Quick, easy and independent tool change
- Multiple tool combination
- Optimized run time for each tool
- High performance and excellent run out

ETP HYDRO-GRIP® COMBO HSK 63F

The new COMBO let you enjoy all the benefits using a hydraulic chuck for your router bits and a hydraulic arbor for your profile tools at the same time. Perfectly centered and balanced.

Quick and easy tool changes independently for each tool, router bit vs. profile tool. The COMBO let you optimize your tool design for maximum performance and cost effectiveness.



Technical Specification

Dimensions, mm																Weight		G 2.5
HSK Size	Part no.	Item description	D1	D2	D3	L1	L2	L3	L4	depth	D4	D5	L5	L6	Screw x3	kg	at rpm	
63	704991	COMBO-16/30x20 HSK63F	16	30	48	20	28	56	82	50	40	54	8	10	M6x35	1.2	12 000	
63	705806	COMBO-16/30x80 HSK63F	16	30	52	80	88	116	142	50	40	54	13	15	M6x100	1.6	12 000	
63	705832	COMBO-20/35x80 HSK63F	20	35	52	80	88	116	142	52	44	59	13	15	M6x100	1.8	12 000	
63 mod	705789	COMBO-16/30x20 HSK63F	16	30	48	20	28	56	82	50	40	54	8	10	M6x35	1.2	12 000	

Dimensions, inch															Weight	G 2.5	
HSK Size	Part no.	Item description	D1	D2	D3	L1	L2	L3	L4	depth	D4	D5	L5	L6	Screw x3	kg	at rpm
63	705825	COMBO-3/4"/1 1/4"x80 HSK63F	0.750	1.250	2.047	3.150	3.465	4.567	5.591	1.969	1.732	2.323	0.512	0.591	M6x100	1.6	12 000

Router bit tool:

Recommended tolerance - h7
Runout accuracy ≤ 0.004 mm at $2.5 \times D1$ (max. 50 mm)
 ≤ 0.00016 inch at $2.5 \times D1$ (max. 1.969 inch)
 ≤ 0.007 mm at $2.5 \times D1$ at length $L4 > 125$ mm
 ≤ 0.00028 inch at $2.5 \times D1$ at length $L4 > 4.921$ inch
Center thread, M8x1.25, for axial length adjustment screw (screw not included)

Profile tool:

Recommended tolerance - H7
Centering only.
Security disc and 3 screws should always be mounted.
Both Router bit and Profile tool has to be mounted before clamping.
Security disc and 3 screws included in shipment.