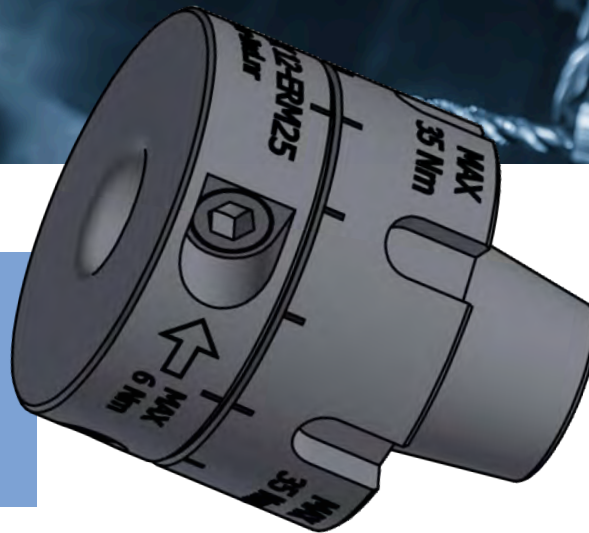


**PLUG
&
PLAY**

BENEFITS & FEATURES

- Turn ER driven tools into hydraulic
- Easy handling and precision
- Excellent repeatability



NO MORE:

- Time-consuming tool changes
- Runout issues
- Limited clamping force

ETP HYDRO-FIX® ER PLUG & PLAY



Upgrade with
ETP hydraulic ER holder and enjoy multiple benefits

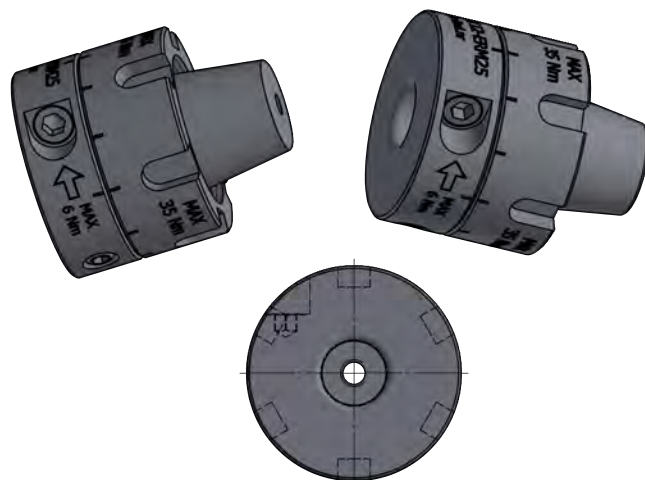
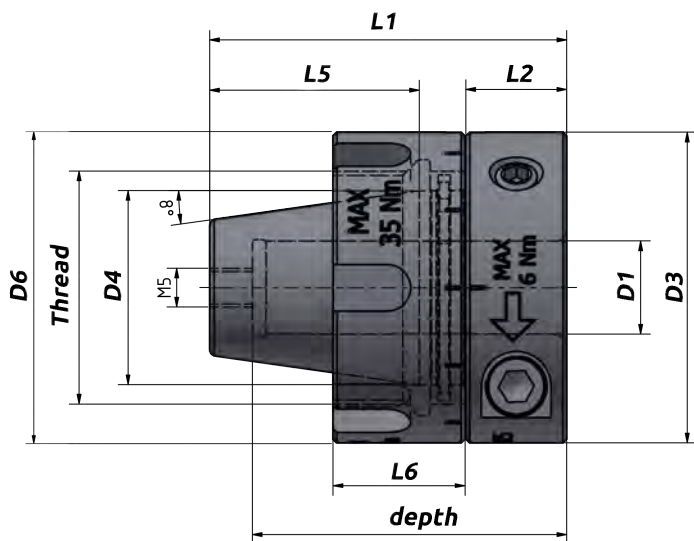
With ETP HYDRO-FIX ER you can easily turn your standard ER collet driven tools into high precision hydraulic holders. Thus you can easily enjoy all the

positive benefits of hydraulic clamping such as easy handling and precision, at an impressive competitive price level. This enables more users to

benefit from decrease tool wear and increased productivity, when compared to using ER collet holders. Simply put it, just **Plug & Play!**

ETP HYDRO-FIX[®] ER

PLUG & PLAY



Metric range

Technical specification															
ER size	Part no.	Item description	Dimensions, mm							Internal thread nut		Pressure screw		Transmittable torque	
			D1	D3	D4	L1	L2	L5	depth	D6	L6	Thread	Tt** Nm	Tt*** Nm	T* Nm
16	671115	HYDRO-FIX-6/ER16	6	25	16	30	8	16	27.5	28	12	M22x1.5	25	2	12 - 22
16	671116	HYDRO-FIX-6/ERM16	6	25	16	30	8	16	27.5	25	12	M19x1	25	2	12 - 22
20	671125	HYDRO-FIX-6/ER20	6	28	20	36	9	21	27.5	30	12	M25x1.5	30	2	12 - 22
20	671126	HYDRO-FIX-6/ERM20	6	28	20	36	9	21	27.5	28	12	M24x1	30	2	12 - 22
25	671135	HYDRO-FIX-12/ER25	12	40	25	46	13	27	40.5	42	17	M32x1.5	35	6	60 - 125
25	671136	HYDRO-FIX-12/ERM25	12	40	25	46	13	27	40.5	40	17	M30x1	35	6	60 - 125

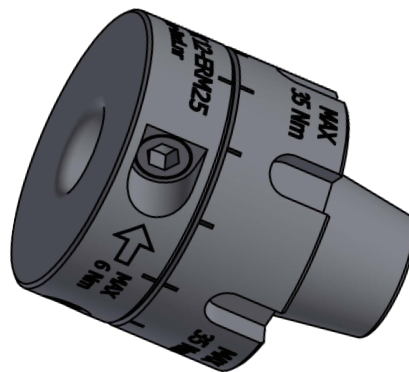
*) T = Min. and Max transmittable torque using a h6 cylindrical tool, full depth insert.

**) Tt = Recommended tightening torque of the thread nut.

***) Tt = Recommended tightening torque of the pressure screw.

Simple mounting procedure

1. Mount the ETP HYDRO-FIX ER in the output shaft and twist to seal
2. Tighten the thread nut to the recommended tightening torque



Information:

- Runout accuracy < 0.01 mm.
- Tool shank h6 or h7 can be used

Accessories:

Use preset torque wrench to ensure correct mounting of tools.
2 Nm - Part no. 19070
6 Nm - Part no. 19055

ETP HYDRO-FIX ER can be used with reducing sleeves.

