

*Turn head aggregates  
or motor shafts with ER output*

#### BENEFITS & FEATURES

- Turn ER driven tools into hydraulic
- Easy handling and precision
- Excellent repeatability



#### NO MORE:

- Time-consuming tool changes
- Runout issues
- Limited clamping force

# ETP HYDRO-GRIP® ER PLUG & PLAY



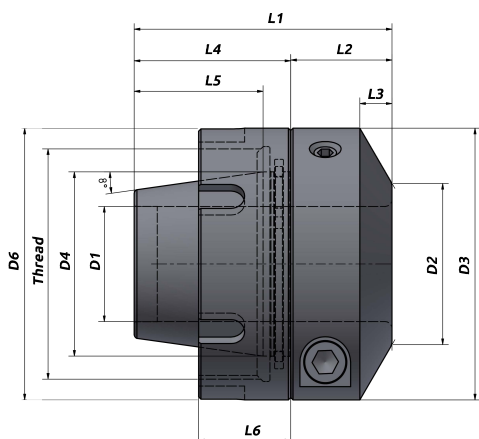
## Upgrade your head aggregates with ETP hydraulic ER holder and enjoy multiple benefits

With ETP HYDRO-GRIP ER you can easily turn your standard ER collet driven tools into high precision hydraulic holders. Thus you can easily enjoy all the

positive benefits of hydraulic clamping such as easy handling and precision, at an impressive competitive price level. This enables more users to

benefit from decrease tool wear and increased productivity, when compared to using ER collet holders. Simply put it, just **Plug & Play!**

# ETP HYDRO-GRIP® ER PLUG & PLAY



## Metric range

### Technical specification

ER size	Part no.	Item description	Dimensions, mm									Internal thread nut				Transmittable torque
			D1	D2	D3	D4	L1	L2	L3	L4	L5	D6	L6	Thread	Tt* Nm	T* Nm
25	671130	HYDRO-GRIP-12/ER25	12	26	40	25	40	13	7	27	21	40	17	M32x1.5	35	50-90
32	671150	HYDRO-GRIP-20/ER32	20	30	52	32	52	21.5	7	30.5	24.5	52	19	M40x1.5	40	230-370
40	671160	HYDRO-GRIP-25/ER40	25	35	59	40	56	22	7	34	28	59	20	M50x1.5	50	420-600

## Inch range

### Technical specification

ER size	Part no.	Item description	Dimensions, inch									Internal thread nut				Transmittable torque
			D1	D2	D3	D4	L1	L2	L3	L4	L5	D6	L6	Thread	Tt* Nm	T* ft-lb
25	671230	HYDRO-GRIP-1/2"/ER25	0.500	1.024	1.575	0.984	1.575	0.512	0.276	1.063	1.063	1.575	0.669	M32x1.5	35	37-66
32	671250	HYDRO-GRIP-3/4"/ER32	0.750	1.181	2.047	1.260	2.047	0.846	0.276	1.201	1.201	2.047	0.748	M40x1.5	40	170-273
40	671260	HYDRO-GRIP-1"/ER40	1.000	1.378	2.323	1.575	2.205	0.866	0.276	1.339	1.339	2.323	0.787	M50x1.5	50	310-443

\*) T = Min. and Max transmittable torque using a h6 cylindrical tool, full depth insert. For additional information see section Technical Information.

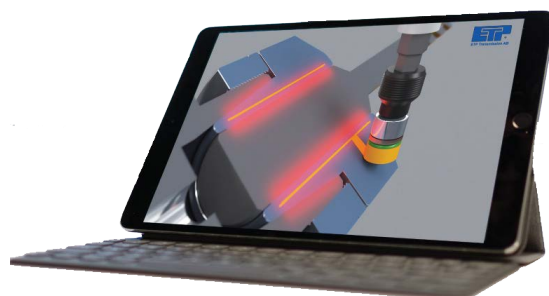
\*\*) Tt = Recommended tightening torque of the thread nut.

## Simple mounting procedure

1. Mount the ETP HYDRO-GRIP ER in the output shaft and twist to seal
2. Tighten the thread nut to the recommended tightening torque

## VIEW VIDEO INSTRUCTION

Scan the code to see the complete procedure how to mount your ETP HYDRO-GRIP ER holder!



### Information:

- Runout accuracy < 0.02 mm.
- Tool shank h6 or h7 can be used

### Accessories:

Use preset torque wrench, 6 Nm, to ensure correct mounting of tools.  
Part no. 19050.

ETP HYDRO-GRIP ER can be used with reducing sleeves.

